

## **2013 Lake Gaston Aquatic Weed Treatment Plan Maps**

### **Northampton County**

**Jimmies Creek**  
**Timberline Shores**  
**Speckle Cove**

### **Warren County**

**Big Stonehouse Creek**  
**Lyons Creek**  
**Lizard Creek**

### **Halifax County**

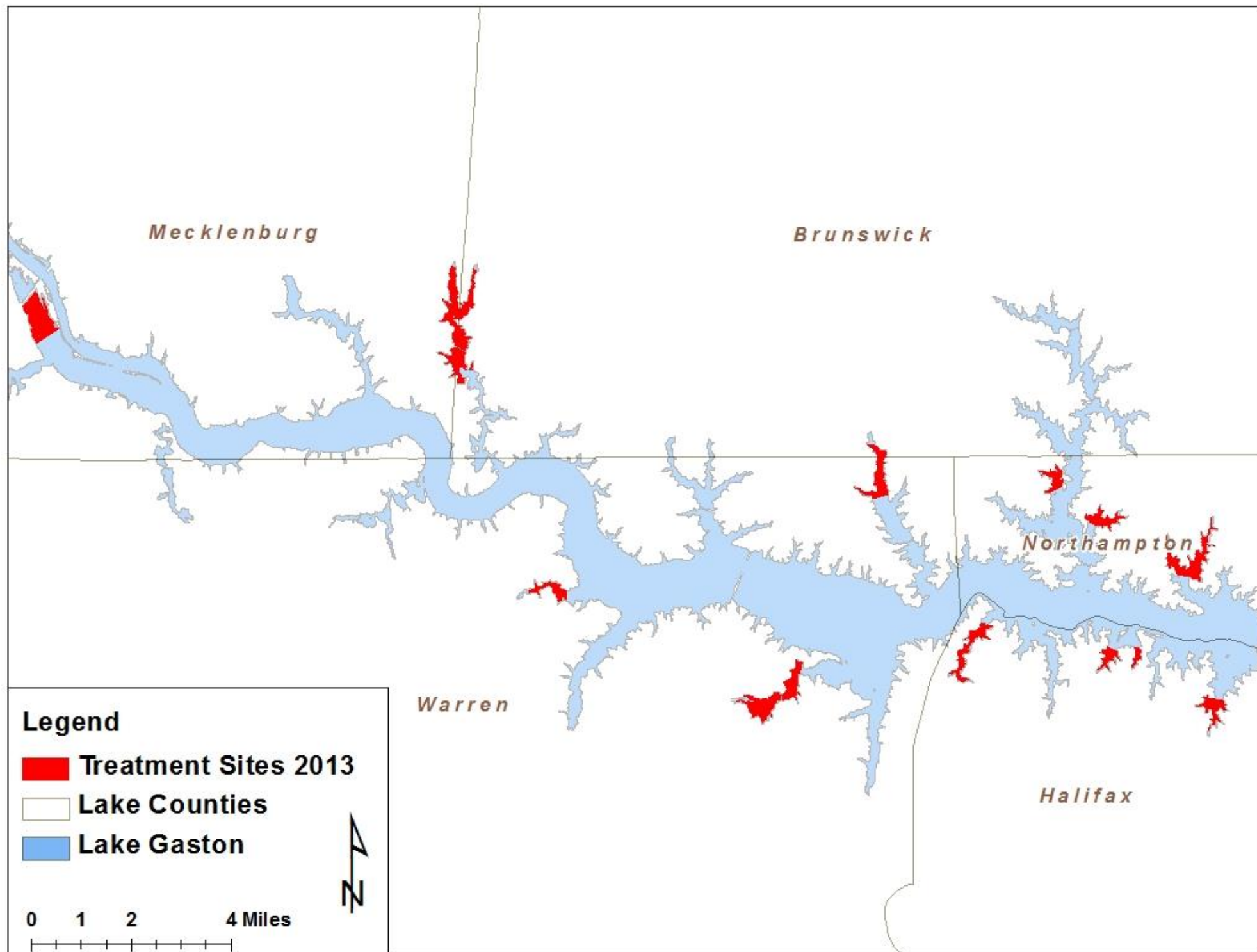
**Sledge**  
**Woodland Hurst**  
**Pretty Creek**  
**Lees Creek**

### **Brunswick County**

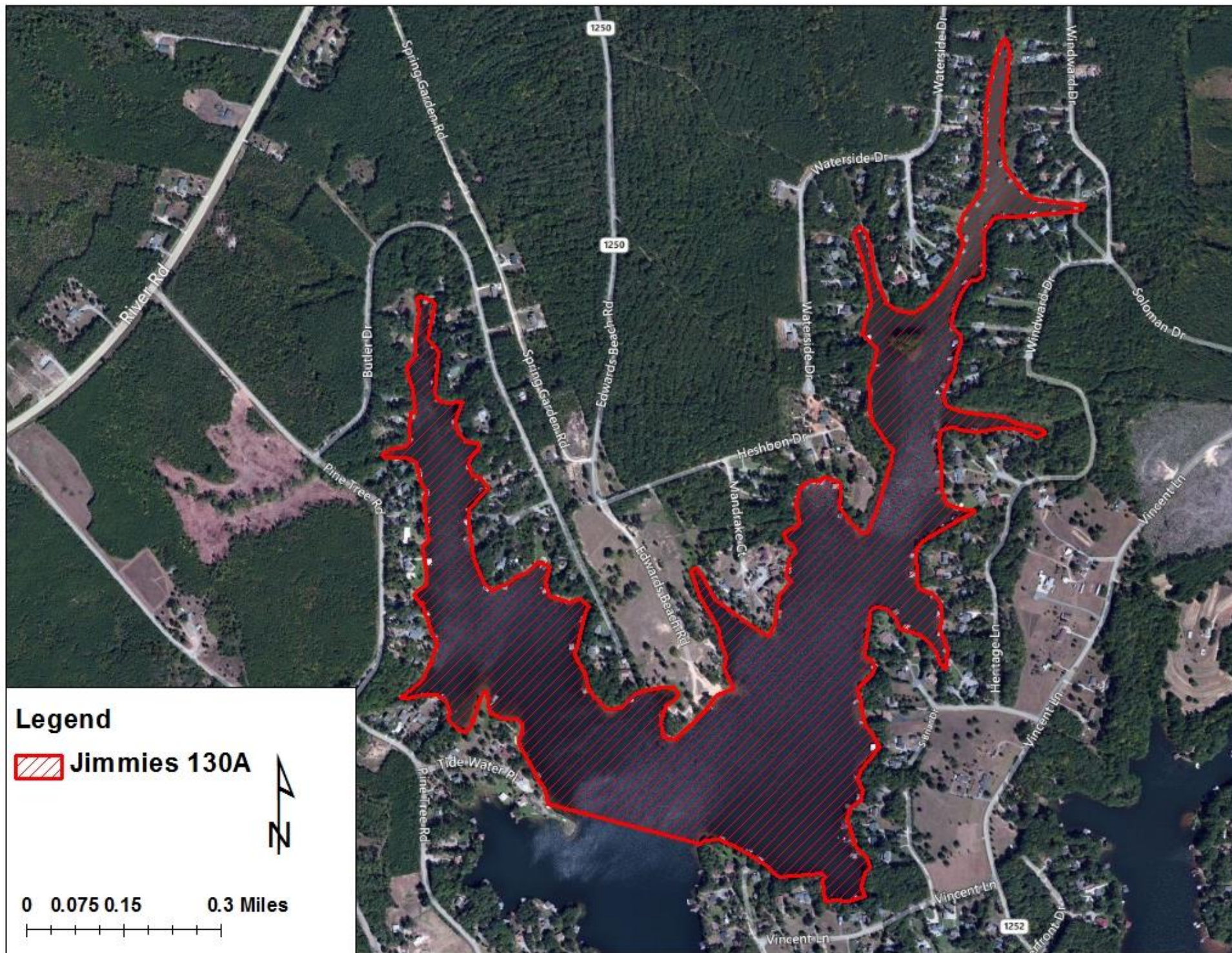
**Poplar Creek Above Bridge (east)**  
**Poplar Creek Below Bridge (east)**  
**Lizard Creek**

### **Mecklenburg County**

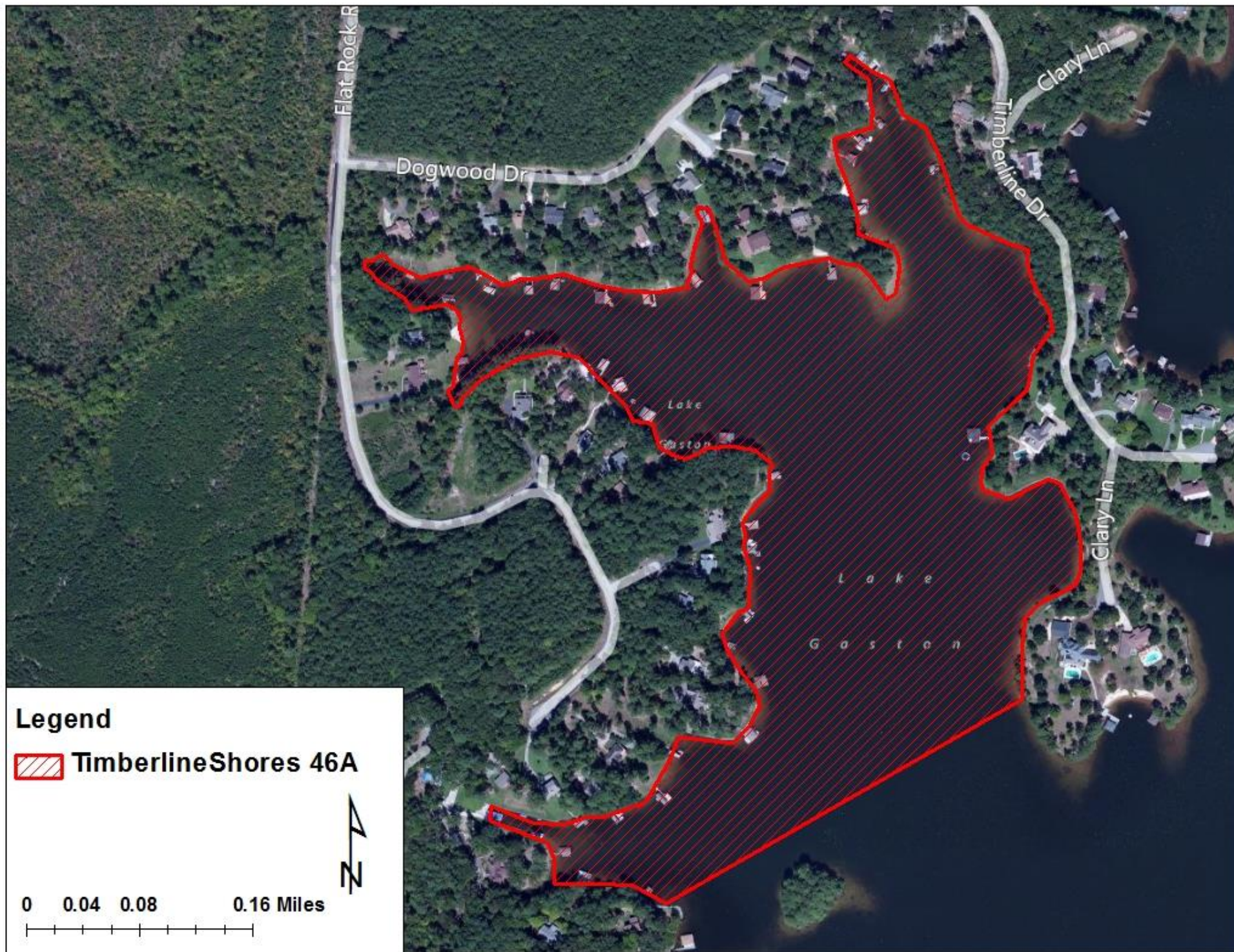
**Poplar Creek Above Bridge (west)**  
**Poplar Creek Below Bridge (west)**  
**The Flats**



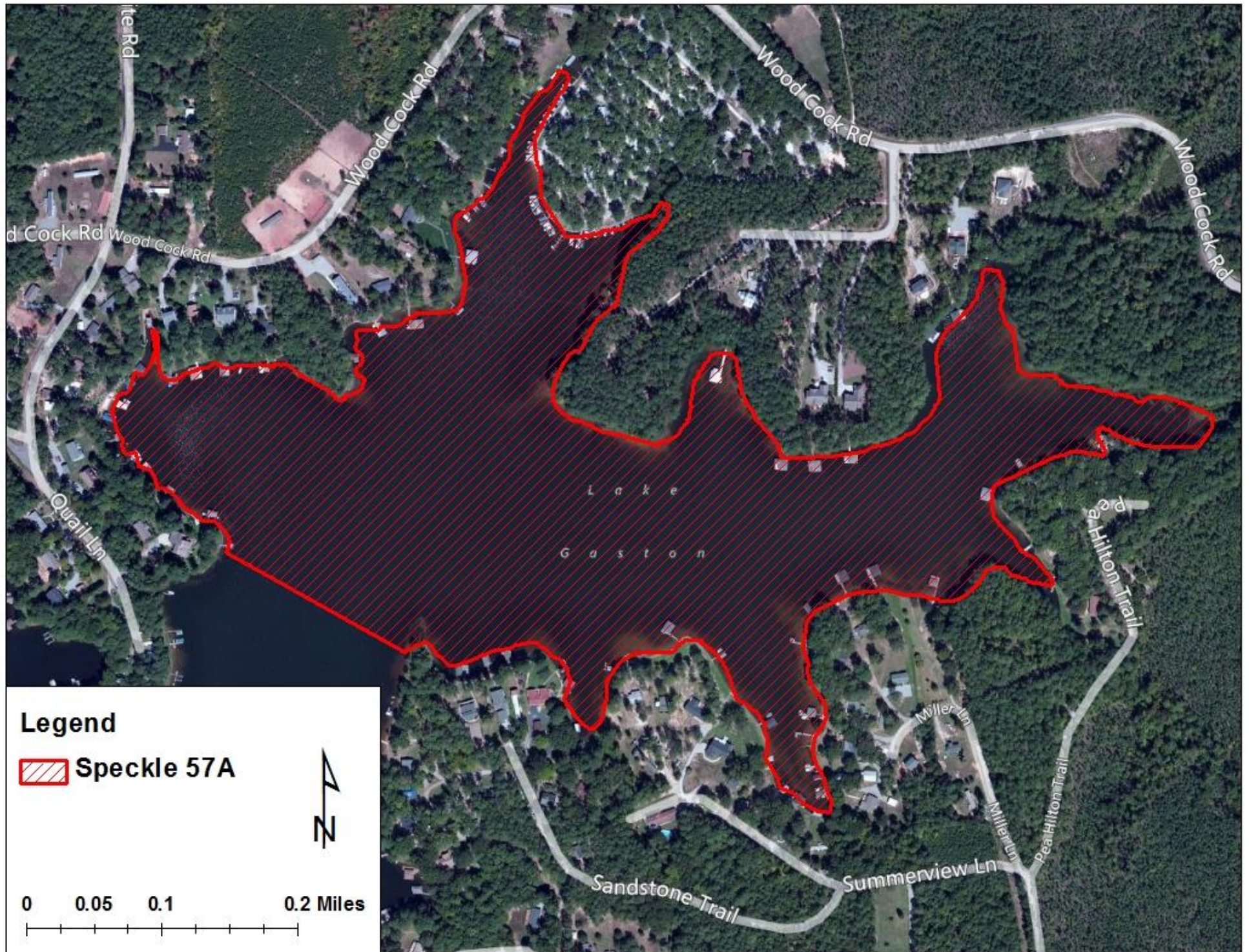




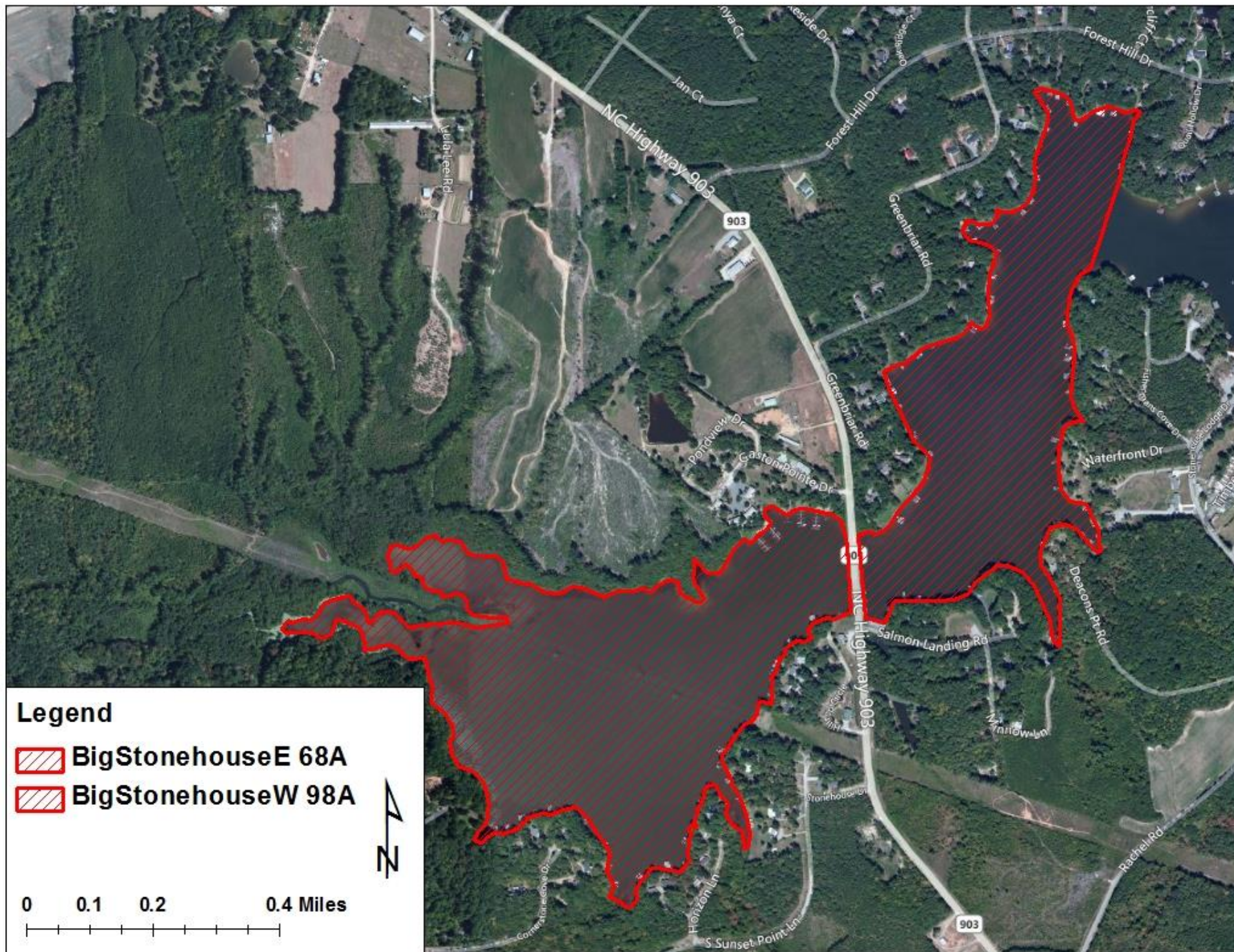




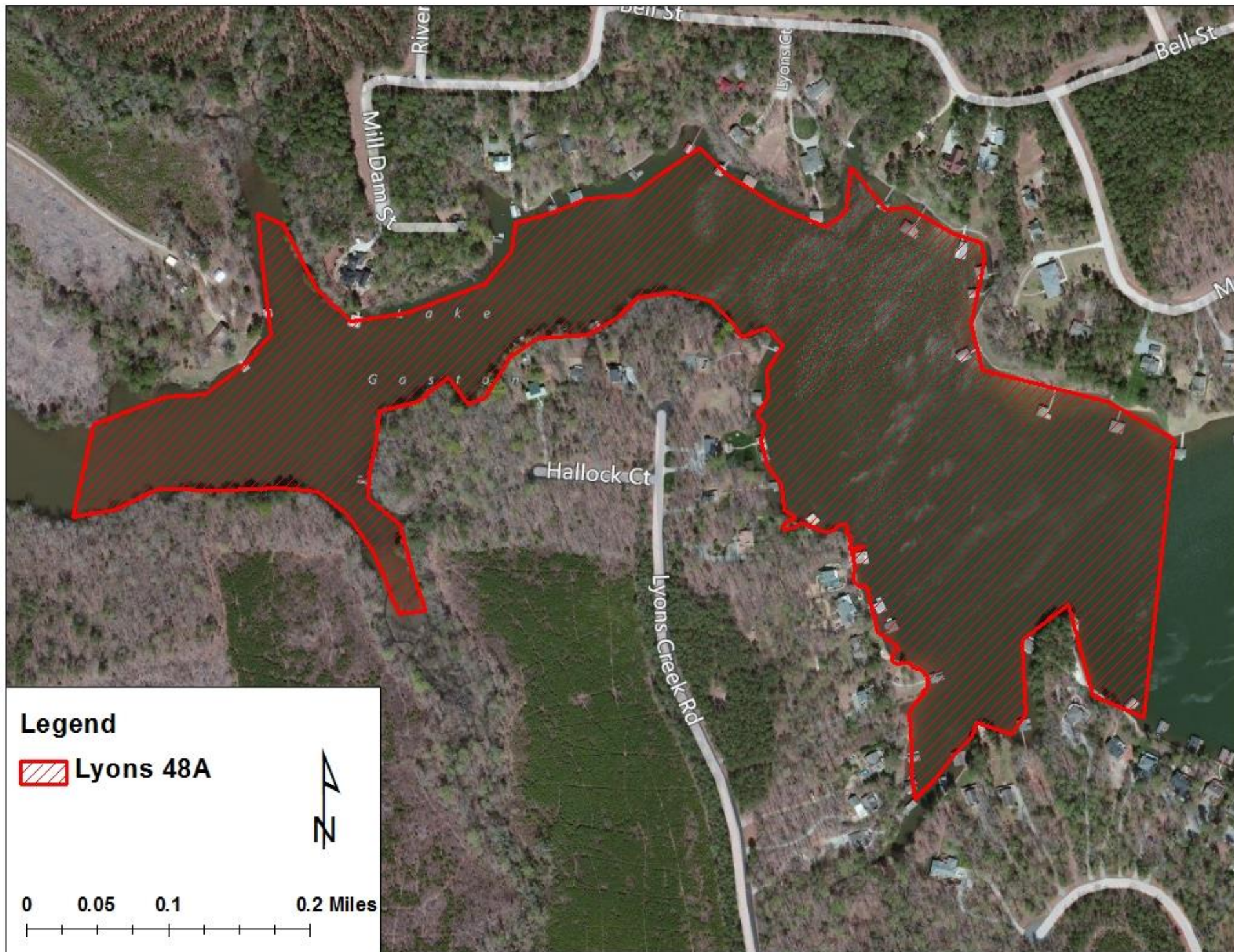




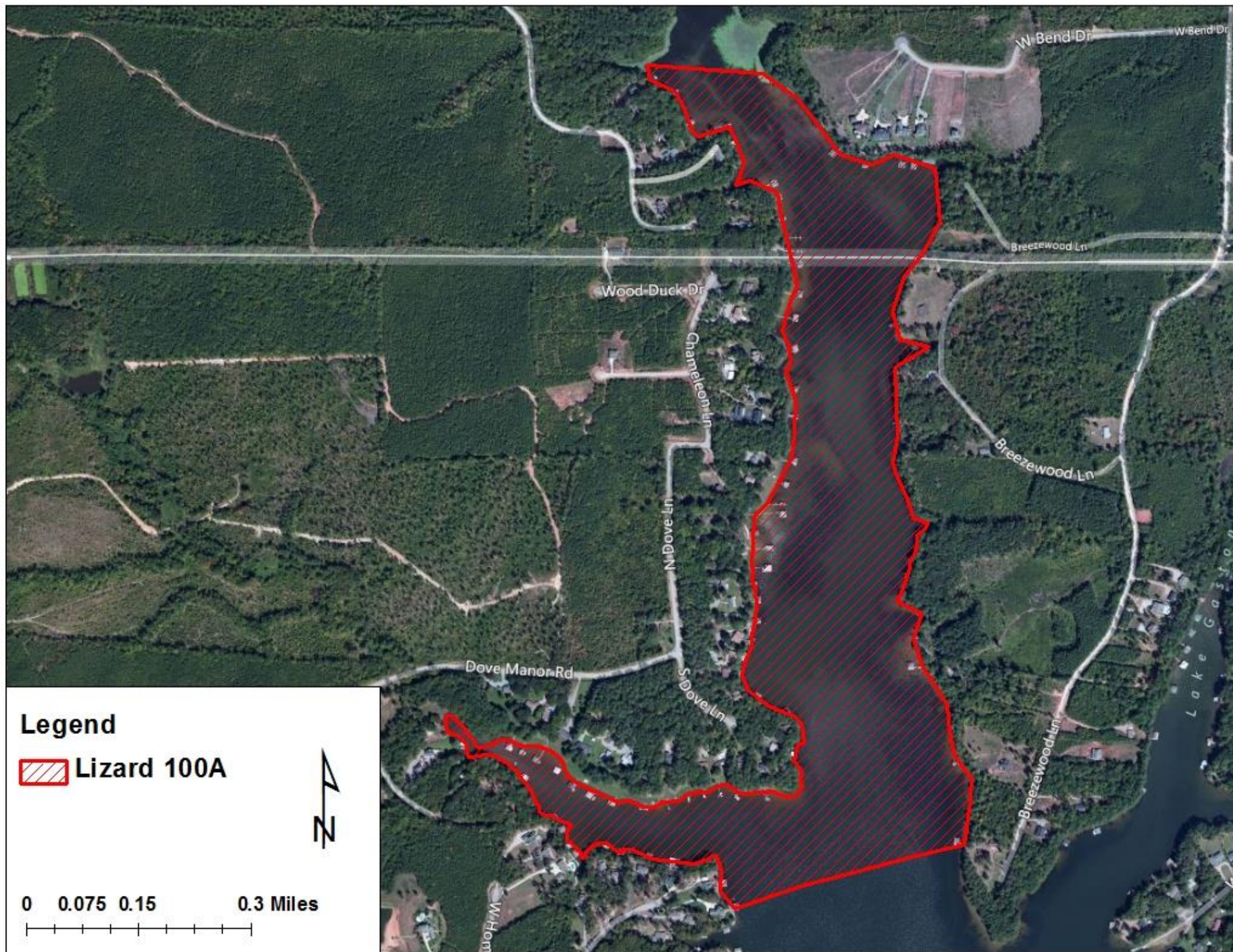




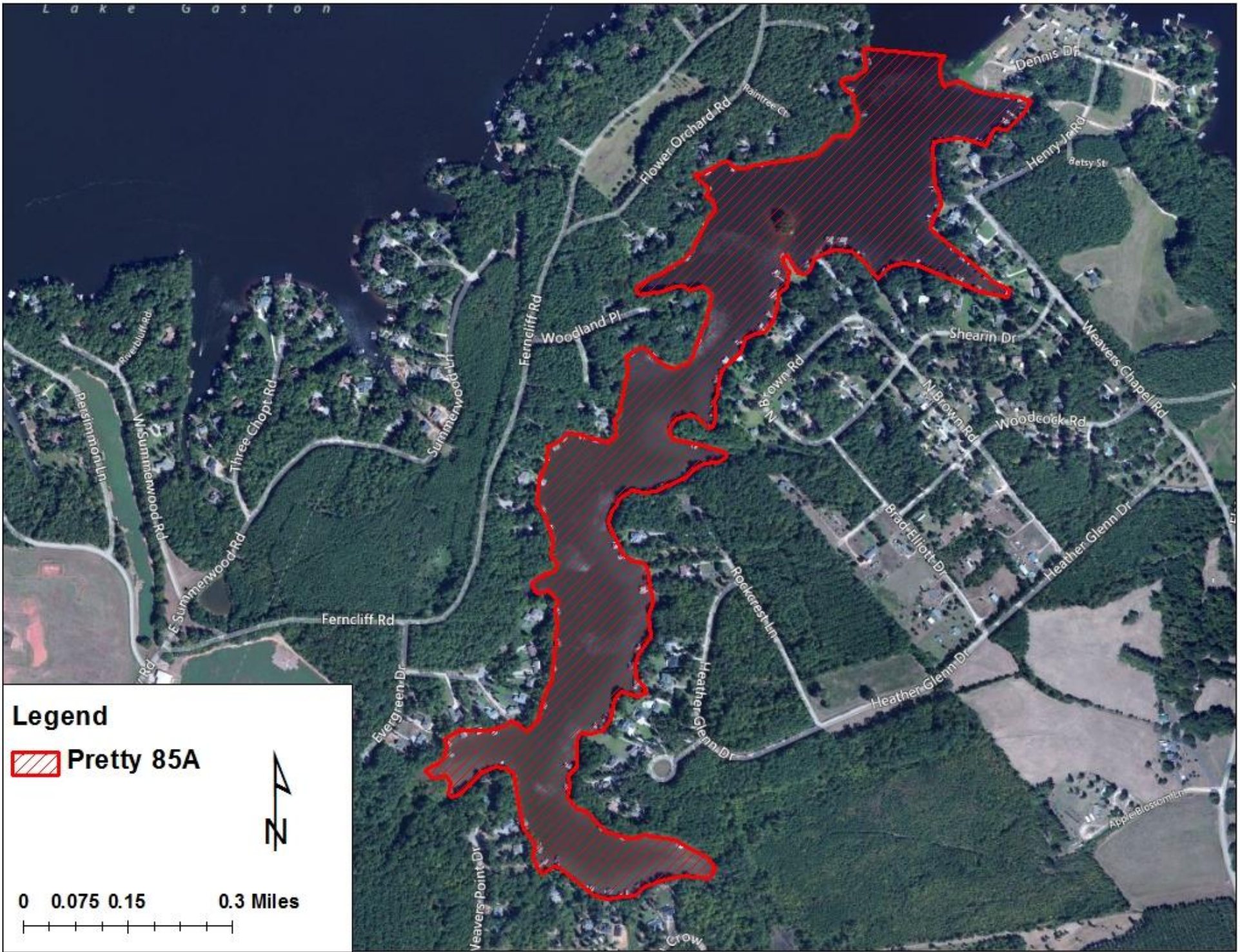




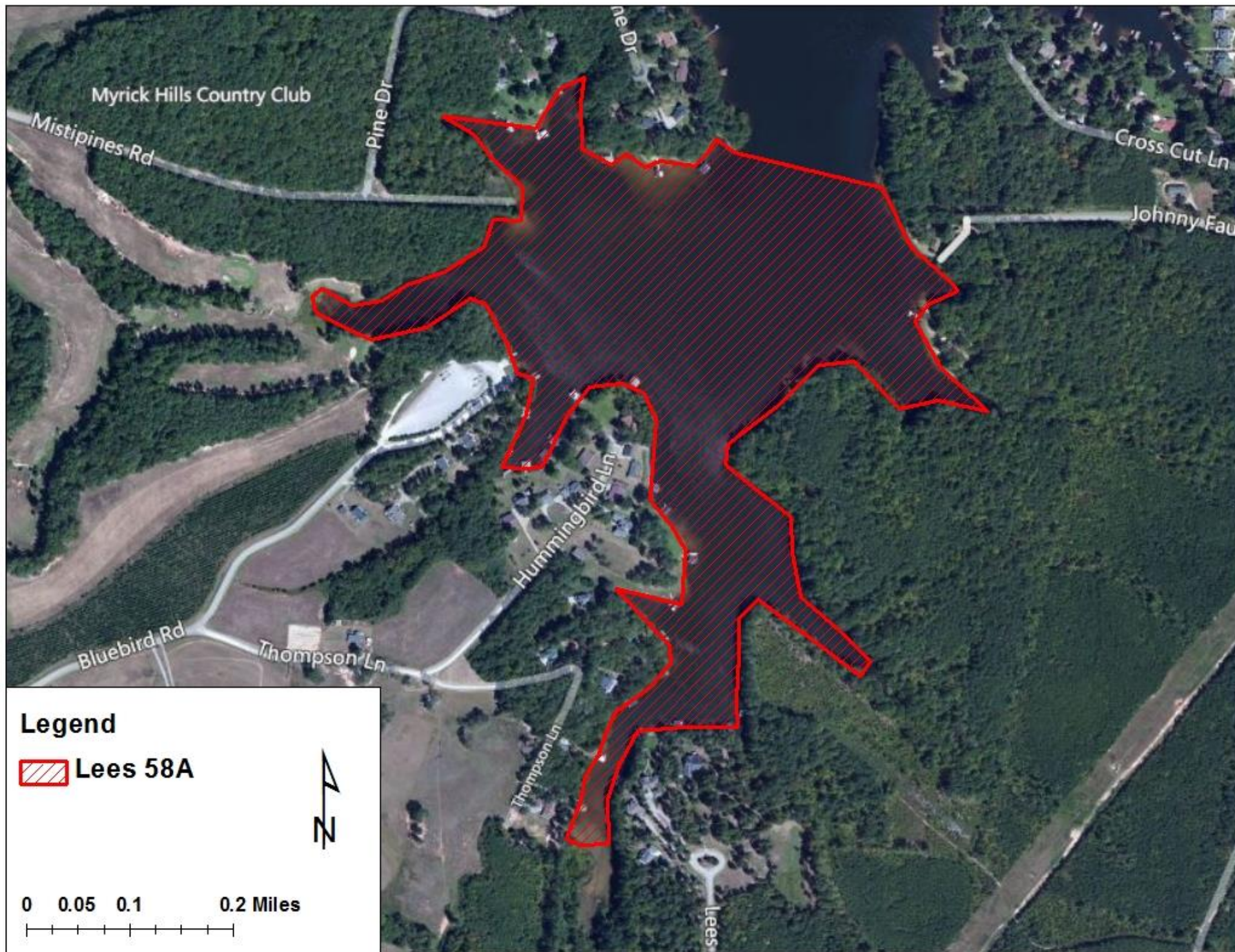




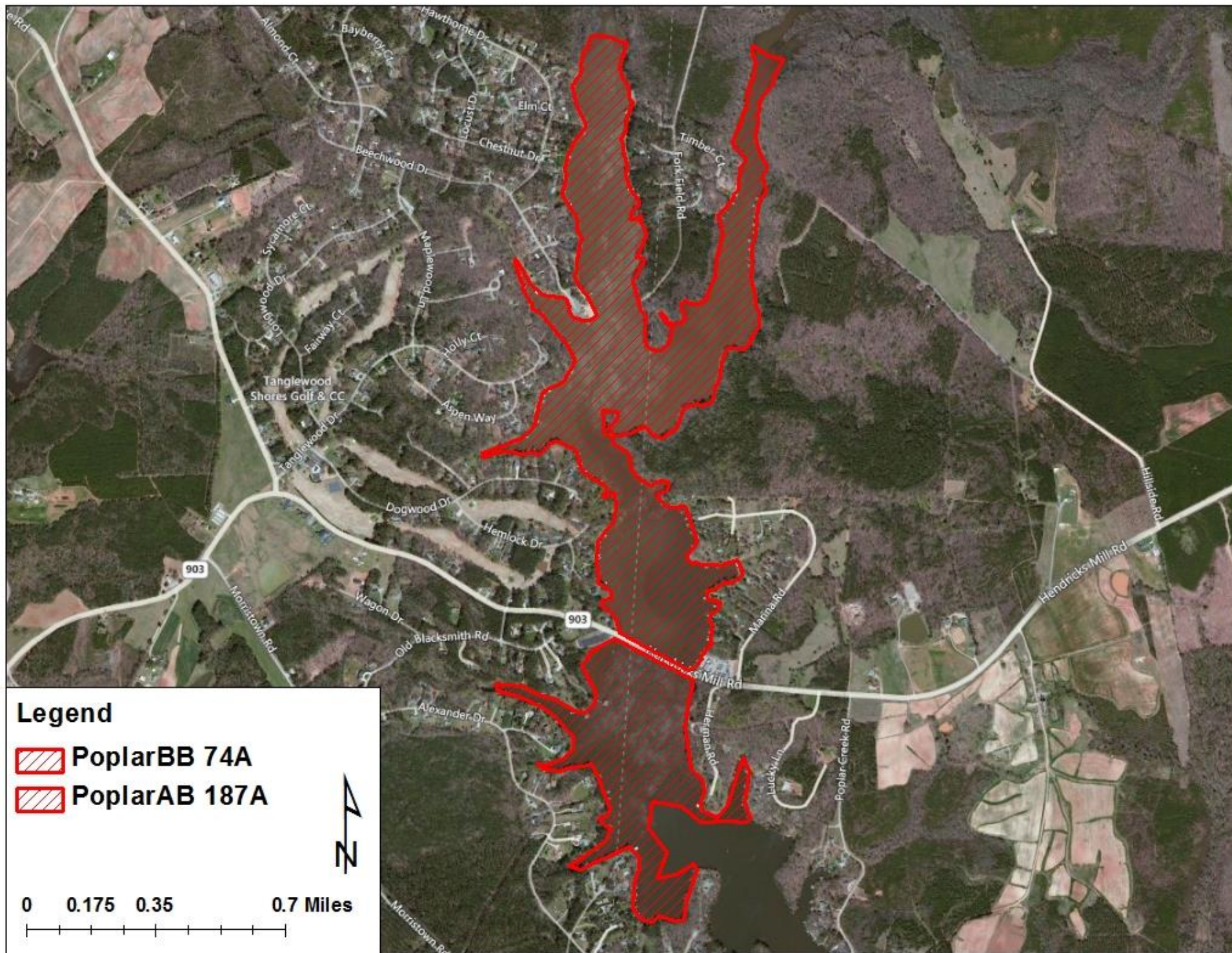




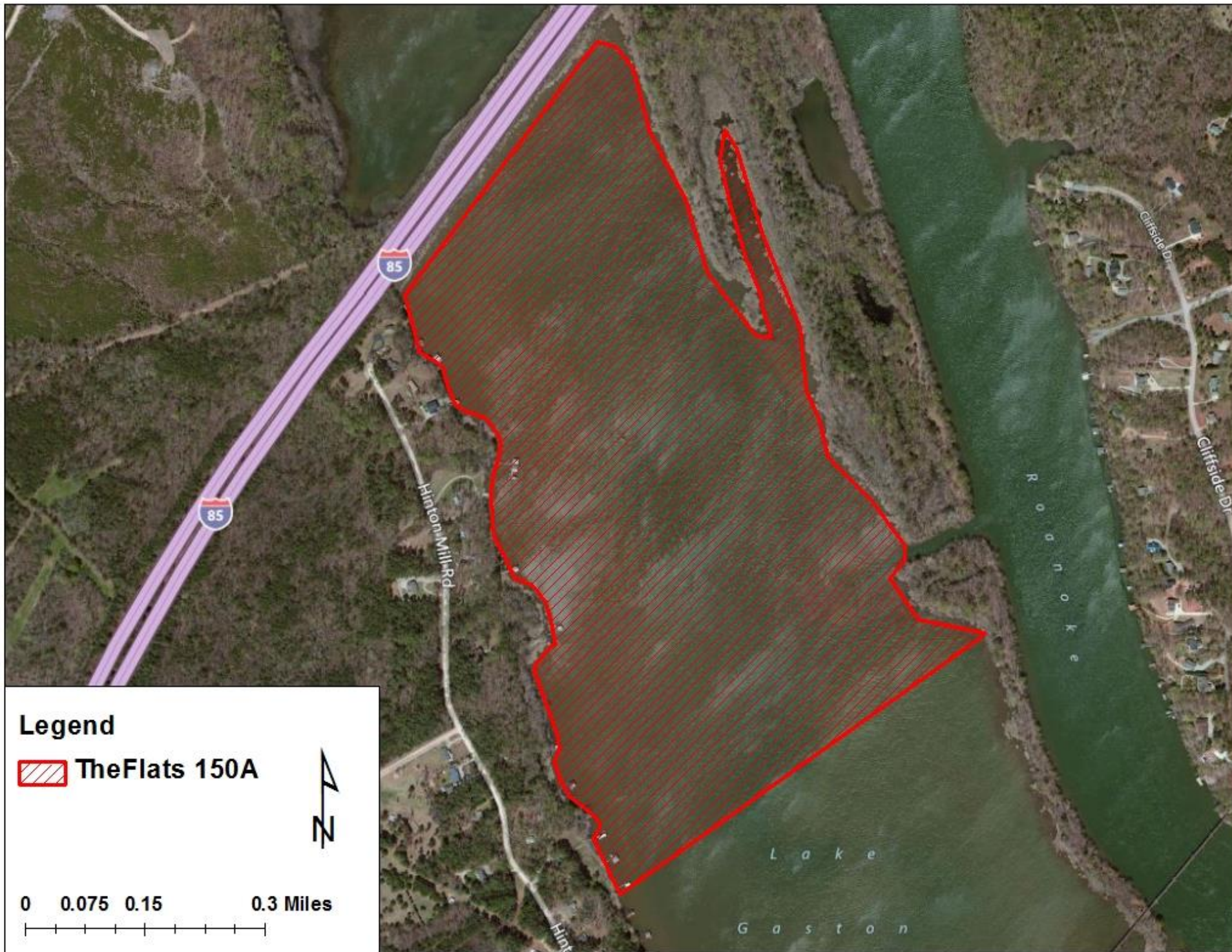




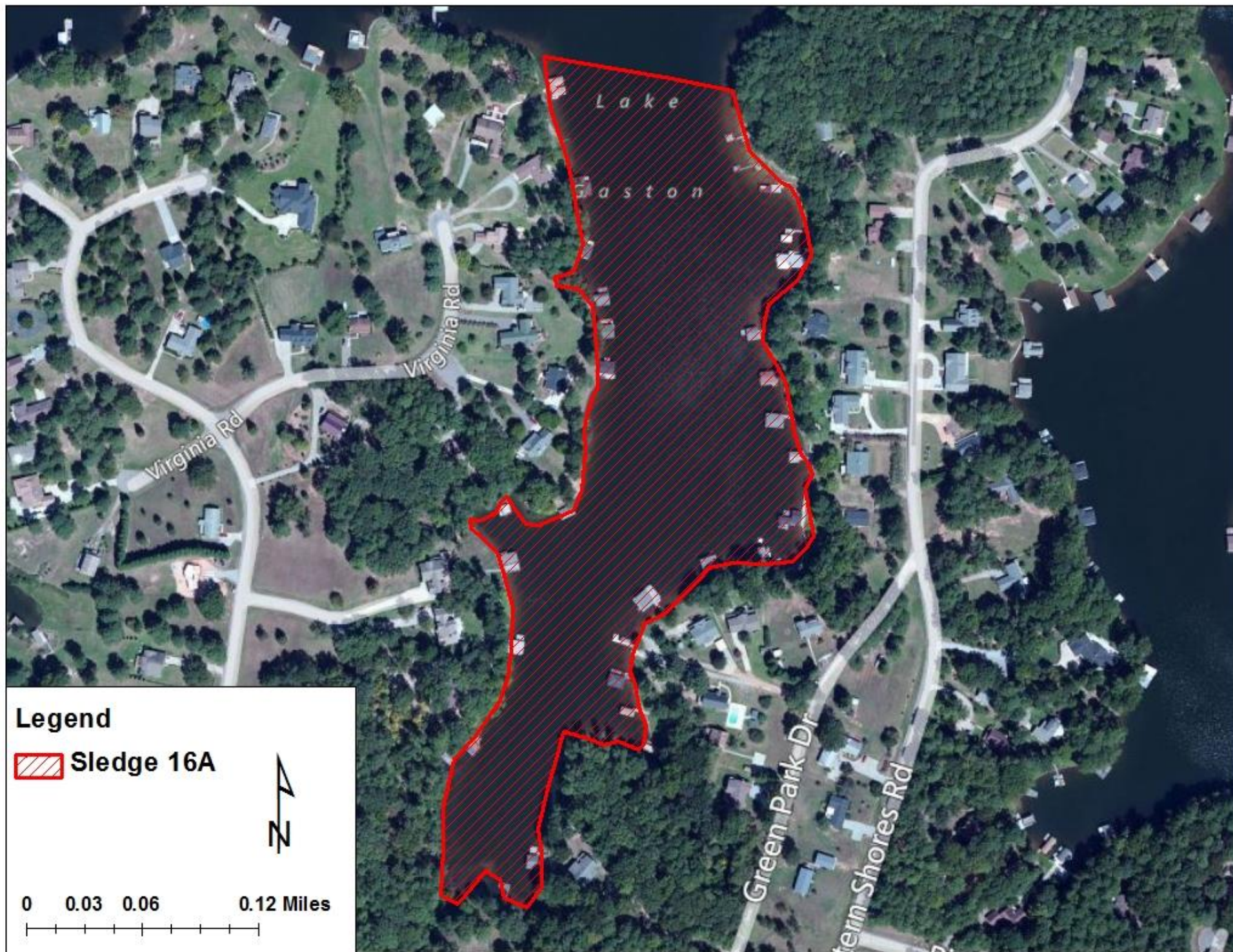




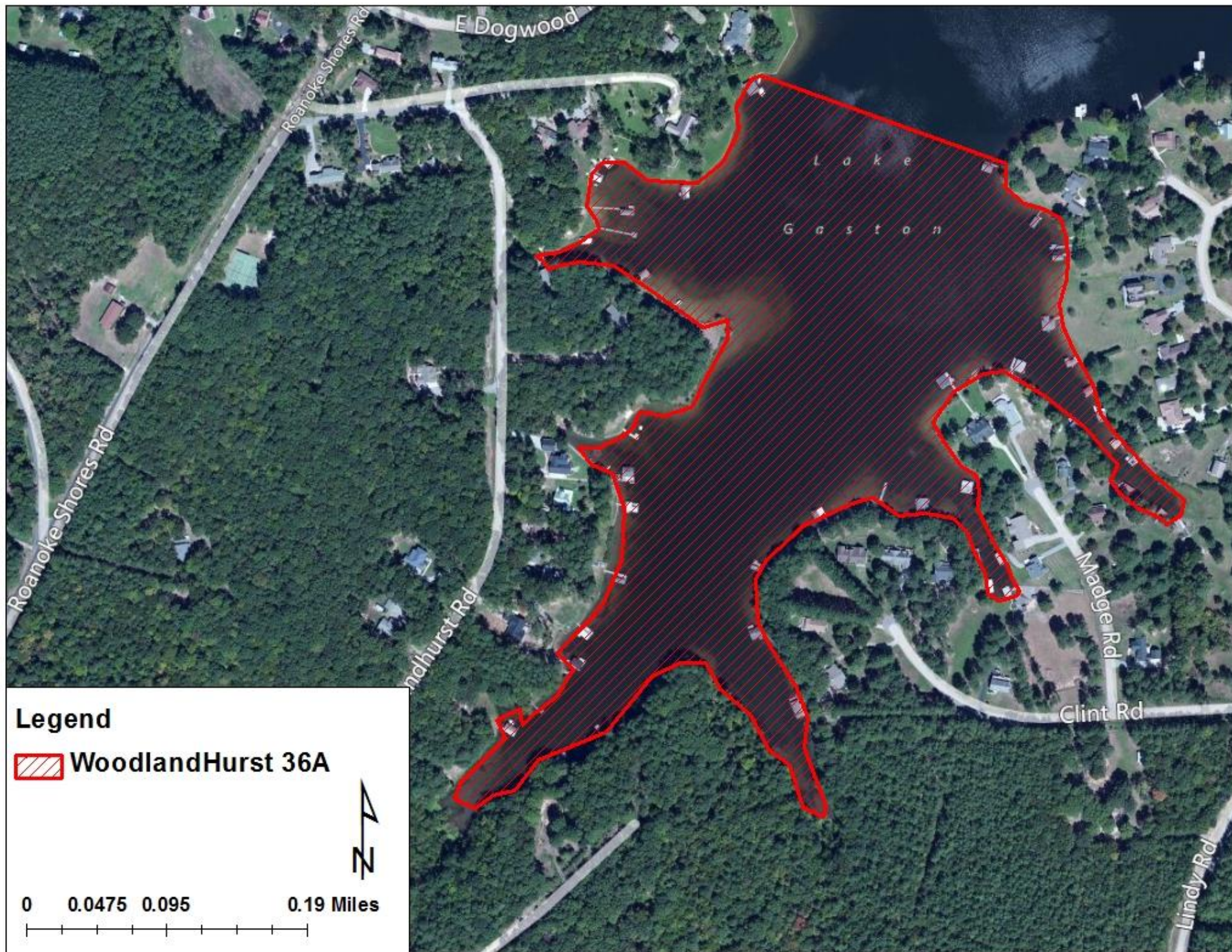














The treatment schedule for 2013 will be announced in the following weeks. For more information on treatment sites or for general questions, comments or concerns regarding aquatic plant management or lake environment, please contact your Aquatics Extension Associate Brett M. Hartis – email: [bmhartis@ncsu.edu](mailto:bmhartis@ncsu.edu), phone: 1-(919)-515-5648.