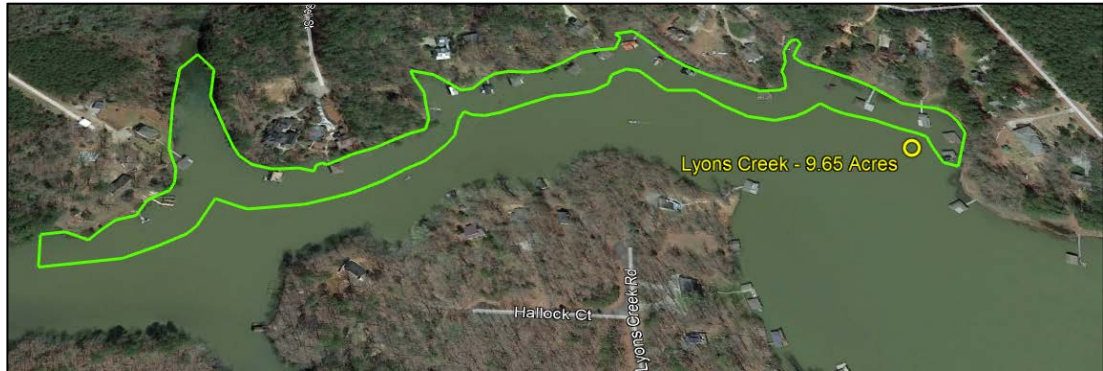


2020 Lyngbya Treatment Sites for Lake Gaston

Single Sites

SePRO

- Lyons Creek – Total of 9.65 acres.
 - Sites and acreages have been adjusted from previous treatment years.
 - Same formula and rates as previous years.



- St. Tammany Creek – Total of 5.61 acres.
 - Site and acreage has not changed from previous treatment years.
 - Same formula and rates as previous years.



Applied Biochemist (AB)

- Lee's Creek – Sites 1 (2.87 acres), 2 (1.64 acres), and 3 (5.34 acres).
 - Same sites and acreages as previous years.
 - Same formula, but different rates than previous years.



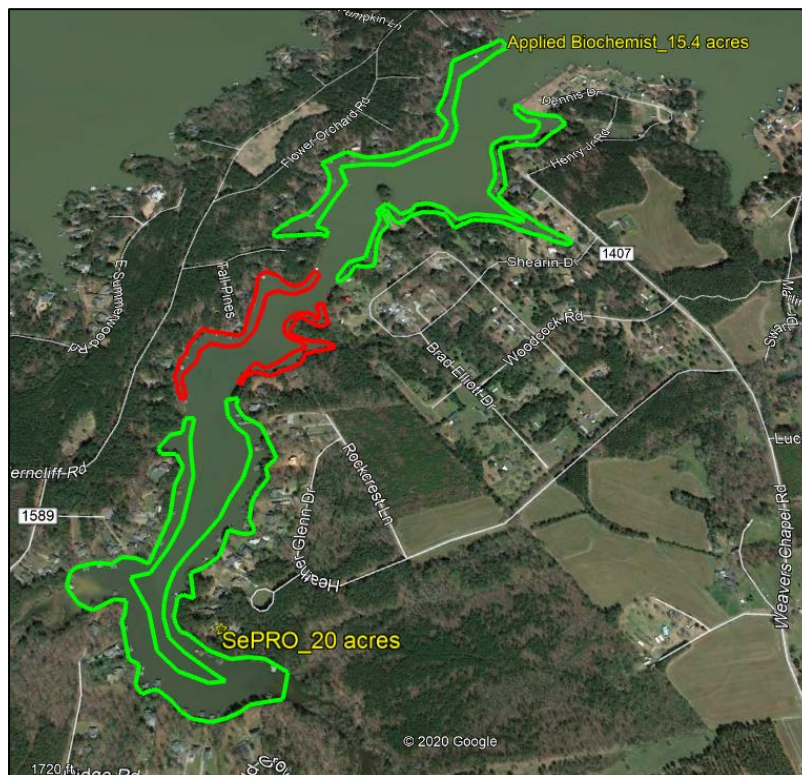
- Rocky Branch – Total acreage of 3.66.
 - Same site and acreage as previous years.
 - Same formula, but different rates than in previous years.



Experimental Design Sites

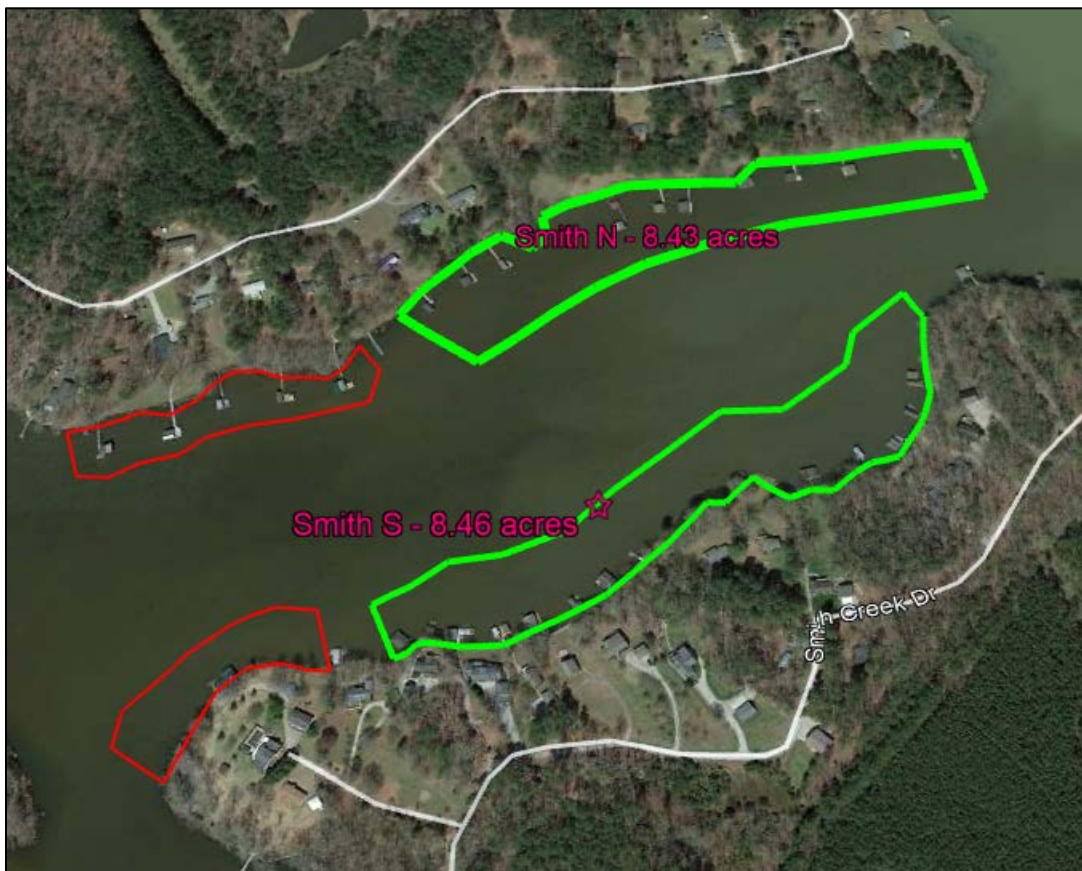
Pretty Creek – Total of 35.37 acres between Applied Biochemist and SePRO. Historical treatment site for both companies.

- Control Sites are indicated in red – Total of 5.80 acres.
 - West site is 3.70 acres and east site is 2.1 acres.
 - Control sites may be adjusted as needed.
- **SePRO** – Total of 20 acres.
 - Site and acreage has been adjusted from previous treatment years.
 - Same formula and rates as previous years.
- **Applied Biochemist** – Total of 15.37 acres.
 - West shoreline is 8.24 acres and the East is 7.13 acres.
 - Sites and acreages have been adjusted from previous treatment years.
 - Same formula, but different rates than in previous years.



Smith Creek – Total of 16.89 acres between Applied Biochemist and SePRO. Historical treatment site for UPL.

- Control Sites are indicated in red – Total of 4.33 acres.
 - North site is 2.44 acres and South site is 1.89 acres.
 - Control sites may be adjusted as needed.
- SePRO – Smith N - Total of 8.43 acres.
 - Acreage for site has not been adjusted from previous treatment years.
 - Same formula and rates as all other SePRO sites.
- Applied Biochemist – Smith S - Total of 8.46 acres.
 - Acreage has been adjusted from previous treatment years.
 - AB would like to change the product formula to Cutrine Ultra + AMP.



Hawtree – Total of 11 acres between Applied Biochemist and SePRO. Historical treatment site for UPL.

- Control Sites are indicated in red – Total of 5.41 acres.
 - Control site may be adjusted as needed.
- **SePRO** – Hawtree N - Total of 5.59 acres.
 - Acreage for site has been adjusted from previous treatment years.
 - Same formula and rates as all other SePRO sites.
- **Applied Biochemist** – Hawtree W - Total of 5.4 acres.
 - Acreage has been adjusted from previous treatment years.
 - AB would like to change the product formula to Cutrine Ultra + AMP.



Overview of Sites / Acreage

SePRO		Applied Biochemist	
	<i>Acreage</i>		<i>Acreage</i>
St. Tammany	5.61	Lee 1	2.87
Lyons	9.65	Lee 2	1.64
Pretty	20	Lee 3	5.34
Smith (new)	8.4	Rocky Branch	3.66
Hawtree (new)	5.59	Pretty	15.37
		Smith (new)	8.4
		Hawtree (new)	5.4
TOTAL ACREAGE	<i>49.25</i>	TOTAL ACREAGE	<i>42.68</i>